

# iVue

Elegantly **Small**  
Impressively **Powerful**



From the creators of RTVue-100,  
**optovue** brings **High Definition OCT**  
**technology to clinicians everywhere.**

- Comprehensive Retina, Glaucoma *and* Cornea scans and reports
- Retina mapping – 5 um high resolution images
- Glaucoma – RNFL analysis and mapping
- Corneal imaging and touchless pachymetry mapping
- COMPACT, PORTABLE *and* AFFORDABLE
- Largest OCT normative database – over 1,100 eyes
- Technician and patient friendly for fast, efficient workflow
- Optional footswitch control to facilitate operator-patient interaction
- Easy to interpret reports
- Registration software for reliable patient visit comparisons

**The most revolutionary diagnostic tool in eye care.**

**CLARION**<sup>TM/MC</sup>  
MEDICAL TECHNOLOGIES

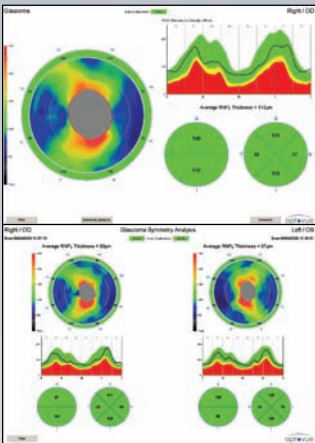
800 668 5236

[www.clarionmedical.com](http://www.clarionmedical.com)



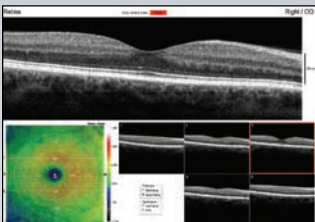
# iVue

Elegantly **Small**  
Impressively **Powerful**



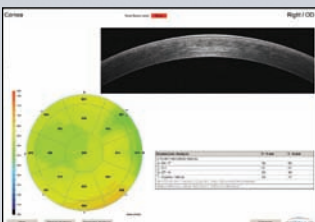
## Glaucoma

- ✓ 6 mm diameter radial scanning combined with concentric ring scans
- ✓ RNFL 3.45 TSNIT tracing
- ✓ NFL map (5.93 mm diameter)
- ✓ Automatic disk center registration
- ✓ En face SLO image with map overlay
- ✓ Change analysis / symmetry analysis
- ✓ 1,100 eye normative database (age, ethnicity, disk size)



## Retina

- ✓ 6mm x 6mm macular map
- ✓ 5 raster scans 250 micron separation; each line captured 5 times for enhanced images
- ✓ Macular thickness & structural change analysis
- ✓ En face SLO image with map presentation
- ✓ 1,100 eye normative database (age, ethnicity)
- ✓ 5 um resolution



## Cornea

- ✓ Pachymetry map at 6mm diameter with zone quadrant thickness averaging
- ✓ Keratoconus assessment
- ✓ High detail corneal scanning at 5 um resolution
- ✓ Change analysis / symmetry analysis
- ✓ 5 um resolution