

**Root Mean Square - HO Total - 6.00 mm**

z	n	m	Name	$\mu$
3	2	-2	Astigmatism	0.000
4	2	0	Defocus	0.000
5	2	2	Astigmatism	0.000
6	3	-3	Trefoil	0.213
7	3	-1	Coma	0.058
8	3	1	Coma	0.088
9	3	3	Trefoil	0.052
10	4	-4	Tetrafoil	0.078
11	4	-2	Astigmatism	0.020
12	4	0	Spherical	0.285
13	4	2	Astigmatism	0.020
14	4	4	Tetrafoil	0.031
15	5	-5	Pentafoil	0.030
16	5	-3	Trefoil	0.014
17	5	-1	Coma	0.011
18	5	1	Coma	0.004
19	5	3	Trefoil	0.005
20	5	5	Pentafoil	0.007
21	6	-6	Hexafoil	0.024
22	6	-4	Tetrafoil	0.018
23	6	-2	Astigmatism	0.000
24	6	0	Spherical	0.002
25	6	2	Astigmatism	0.022
26	6	4	Tetrafoil	0.018
27	6	6	Hexafoil	0.017

**OD**

Date / Time 03-18-2009 / 19:29:01

Clinic

Physician

Operator

---

**Refractive Power @ D = 3.00 mm**

Steep 44.63 D @ 92°

Flat 43.82 D @ 175°

Astigmatism 0.81 D @ 92°

Effective 44.25 D

---

**Sim K**

Steep 7.63 mm / 44.26 D @ 89°

Flat 7.74 mm / 43.60 D @ 179°

Delta 0.66 D @ 89°

Average 7.68 mm / 43.92 D

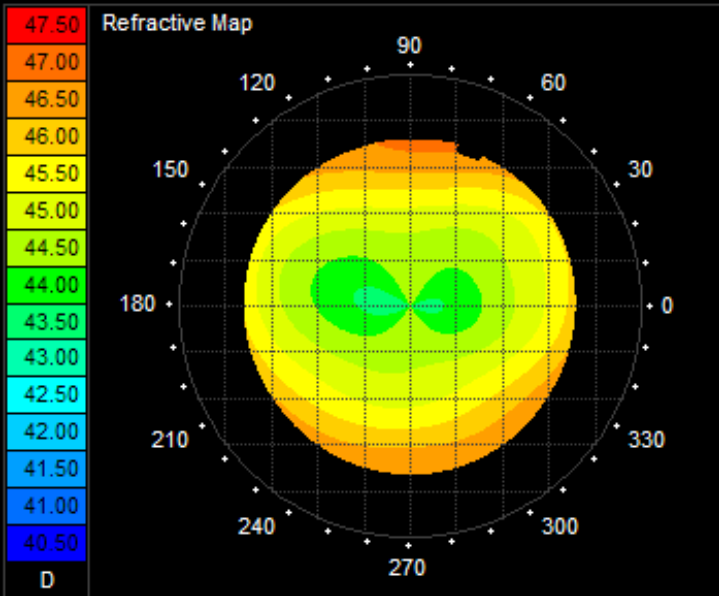
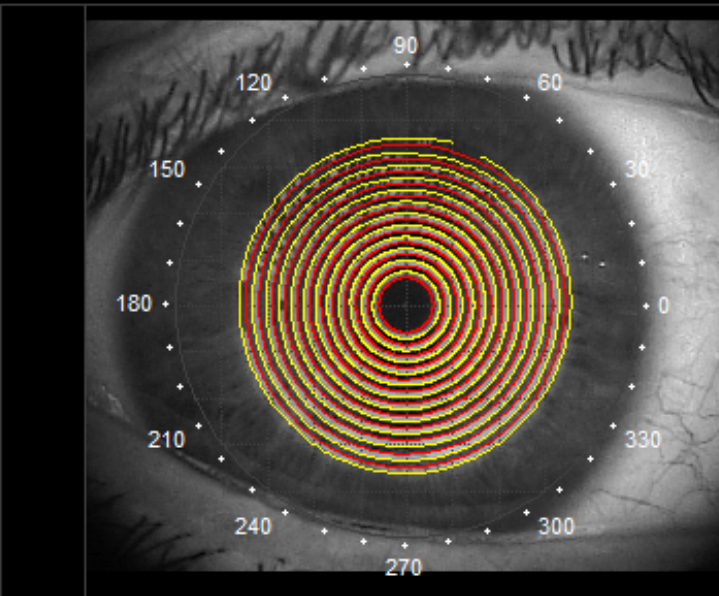
---

**Best Fit Sphere / Conicoid**

R0 = 7.70 mm / R0 = 7.65 mm Q = -0.13 e = 0.36

Central Power 44.04 D

I-S Axial Power @ D = 6.00 mm 0.21 D



Notes