

OD

Date / Time 03-18-2009 / 19:29:01
Clinic
Physician
Operator

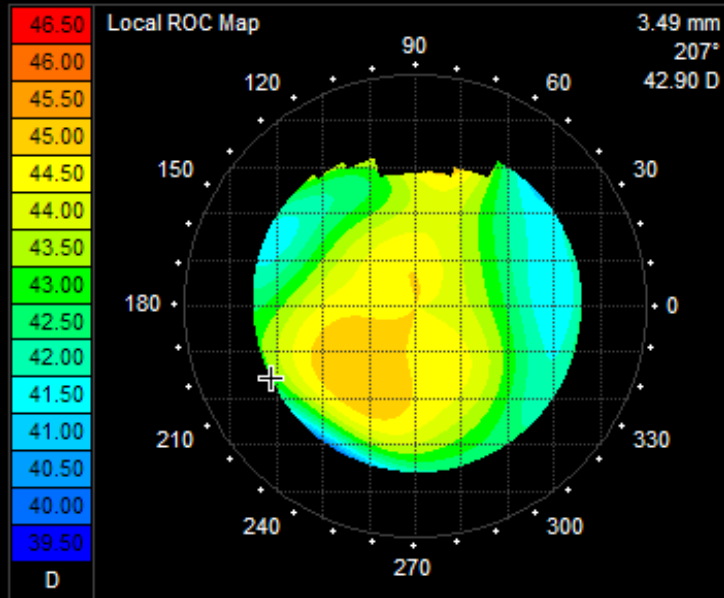
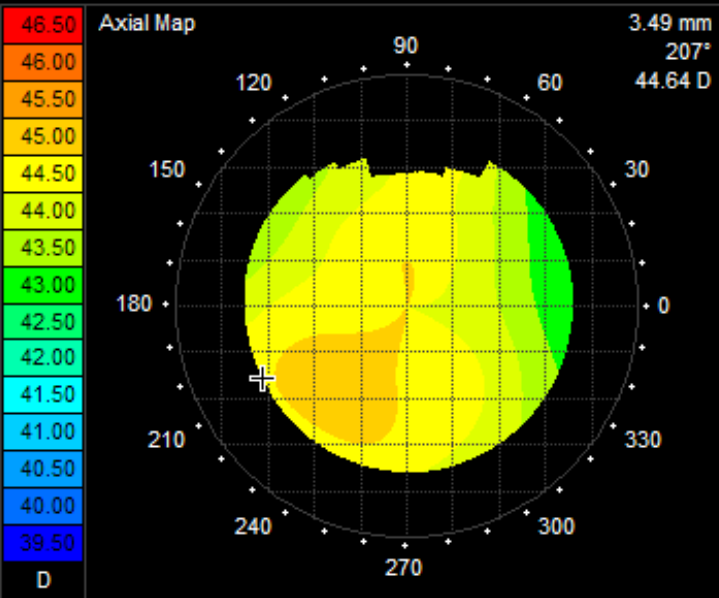
Sim K

Steep	7.63 mm	/ 44.26 D	@ 89°
Flat	7.74 mm	/ 43.60 D	@ 179°
Delta	0.66 D	@ 89°	
Average	7.68 mm	/ 43.92 D	

Best Fit Sphere / Conicoid

R0 = 7.70 mm / R0 = 7.65 mm Q = -0.13 e = 0.36
Central Power 44.04 D
I-S Axial Power @ D = 6.00 mm 0.21 D

Notes



OS

Date / Time 03-18-2009 / 21:04:18
Clinic
Physician
Operator

Sim K

Steep	7.55 mm	/ 44.69 D	@ 80°
Flat	7.63 mm	/ 44.21 D	@ 170°
Delta	0.48 D	@ 80°	
Average	7.59 mm	/ 44.45 D	

Best Fit Sphere / Conicoid

R0 = 7.63 mm / R0 = 7.56 mm Q = -0.16 e = 0.40
Central Power 44.52 D
I-S Axial Power @ D = 6.00 mm

Notes