



FOURIER DOMAIN OCT

in-vivo histology

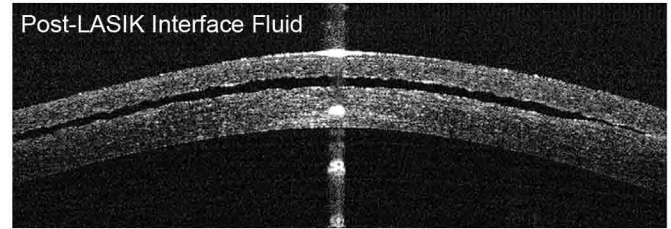
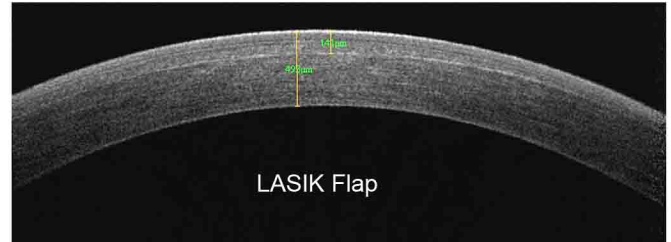
CORNEA - ANTERIOR SEGMENT

the MOST COMPREHENSIVE OCT

New
Cornea Power
Upgrade

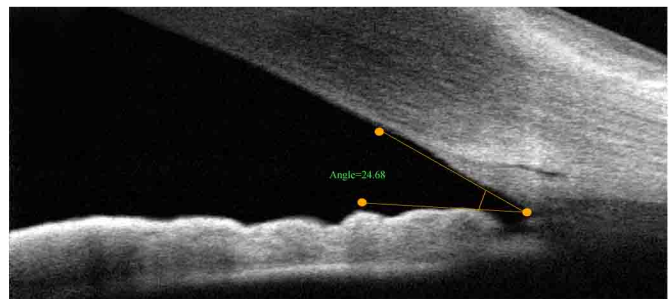
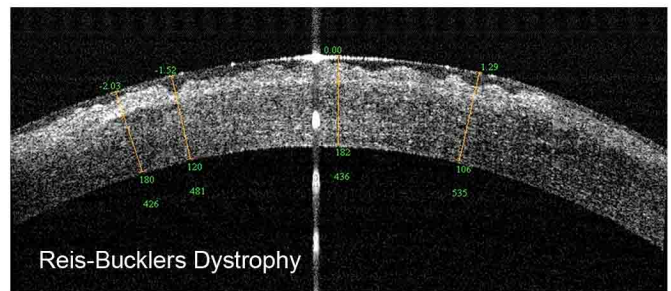
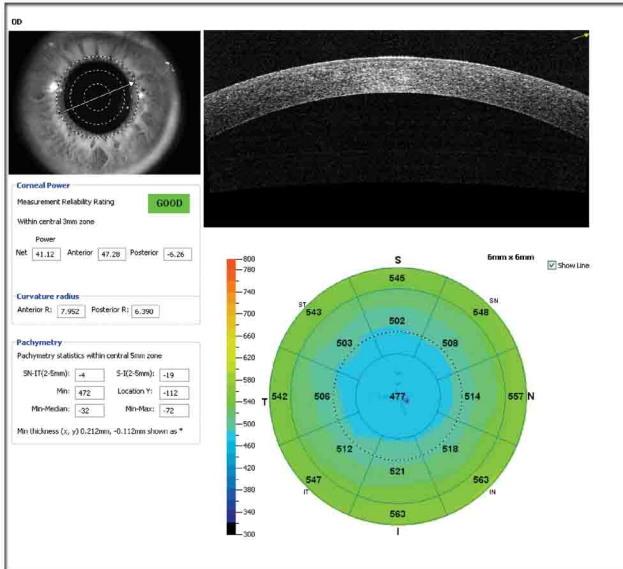
The **CAM** (Cornea-Anterior Module) option for the RTVue® creates the first ever single FD-OCT system for scanning both the posterior as well as the anterior segments of the eye.

The Cornea Power Upgrade directly measures both the anterior and posterior curvatures to obtain cornea powers which are then entered into a unique formula for IOL calculations.



The CAM extends the RTVue® clinical functionality to include:

- New Cornea Power Upgrade
- Full 6 mm diameter Pachymetry Mapping with Minimum Thickness Marker
- Angle Visualization & Measurement (FDA Cleared)
- Epithelium / LASIK Flap Measurement
- Anterior Lens Assessment
- Phakic IOL Vault Measurement
- Shunt / Implant Imaging
- Foreign Body Documentation
- Surgical / Pathology Scar Monitoring
- Contact Lens Fitting

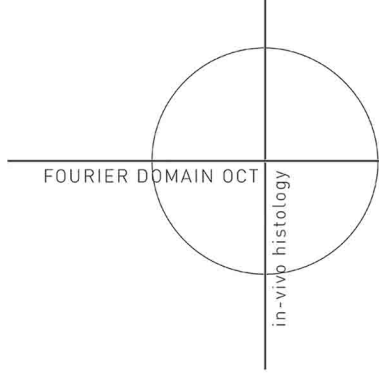


Defining the OCT Revolution

510.623.8868

866.344.8948

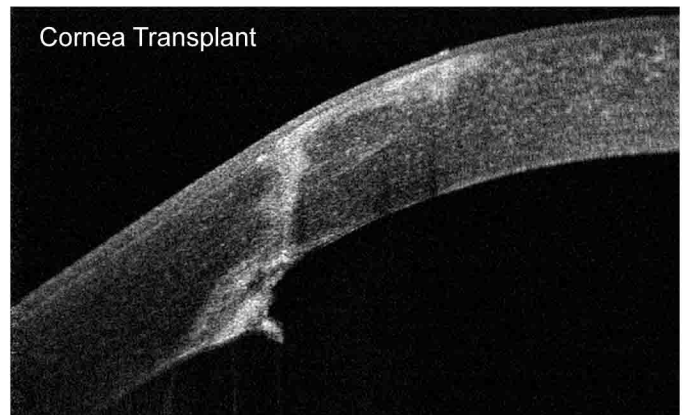
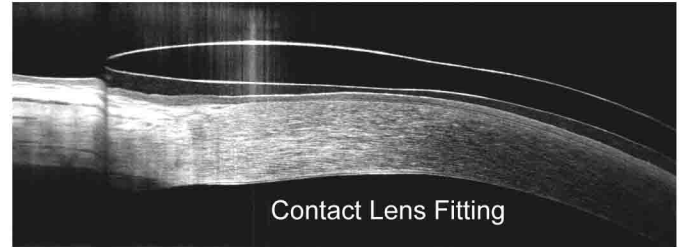
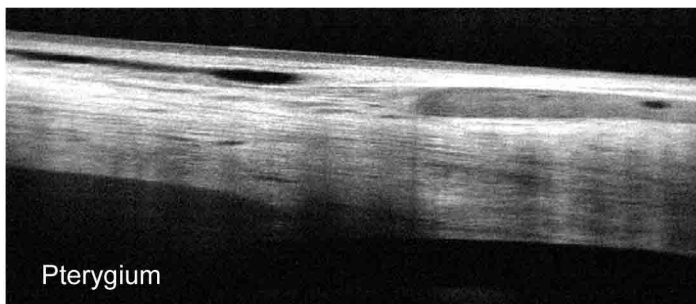
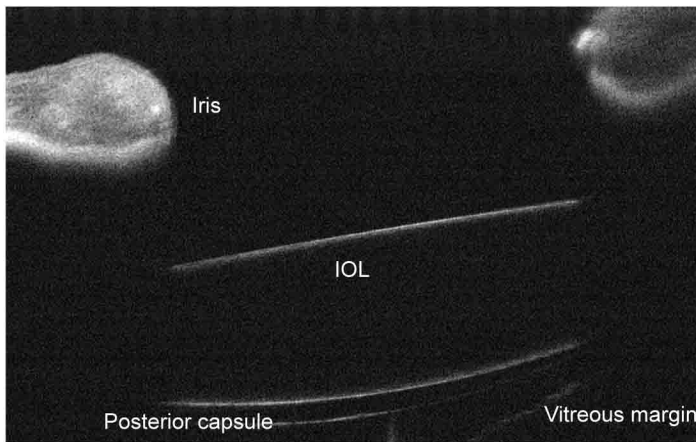
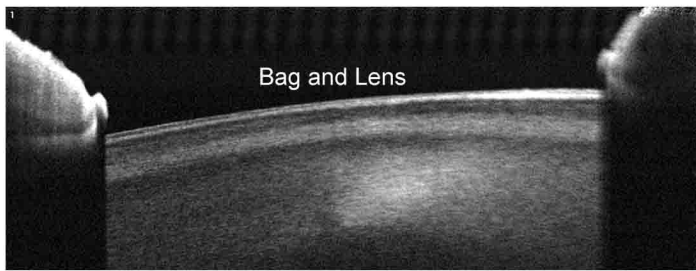
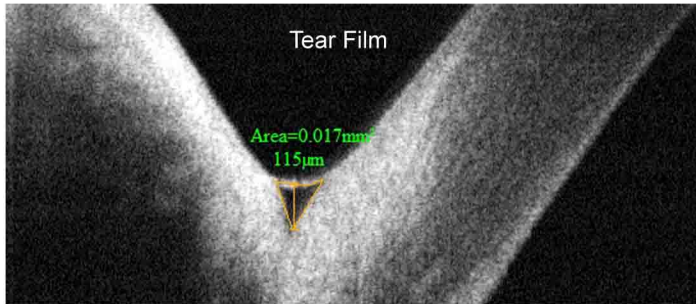
www.optovue.com



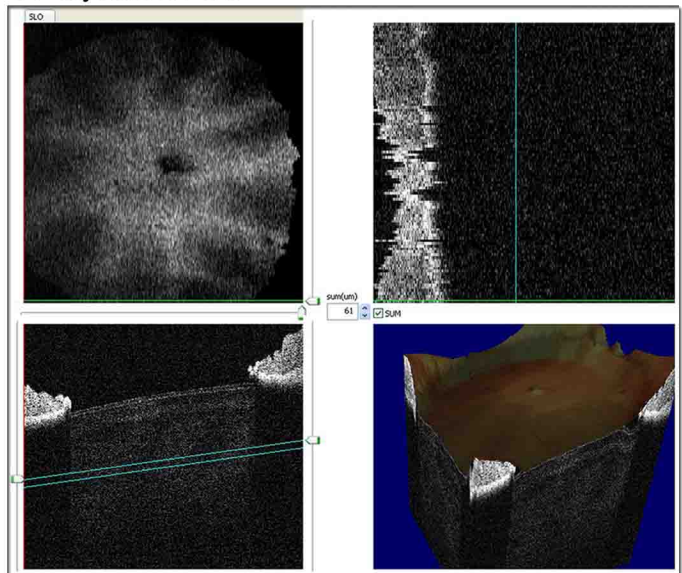
CORNEA-ANTERIOR SEGMENT

the MOST COMPREHENSIVE OCT

Only with the CAM option and RTVue® FD-OCT:



3D Crystalline Lens



Defining the OCT Revolution