

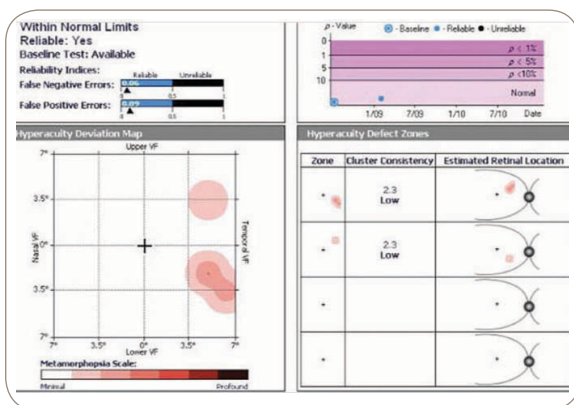
CASE STUDY | HISTOPLASMOSIS

Diana L. Shechtman, O.D., F.A.A.O. — Nova Southeastern University College of Optometry, Ft. Lauderdale, FL

This 65-year-old male had a history of depression and hypercholesterolemia but no other visual or ocular complaints. Signs of histoplasmosis were observed in both eyes, including a previously untreated CNVM in his left eye. Correlation between the PHP, OCT and history helps validate clinical implication for the use of PHP for other entities associated with CNV. Best corrected visual acuity: 20/20 right eye and 20/50 left eye.

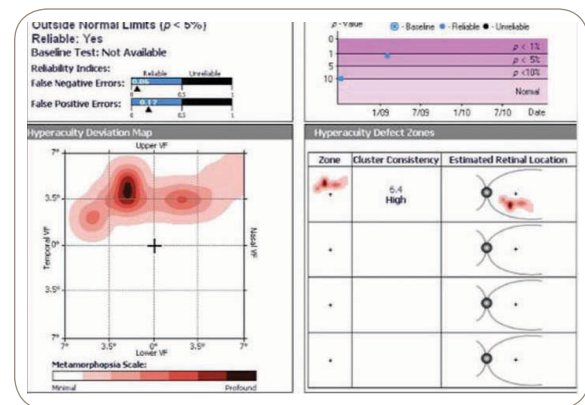
RIGHT EYE

PHP



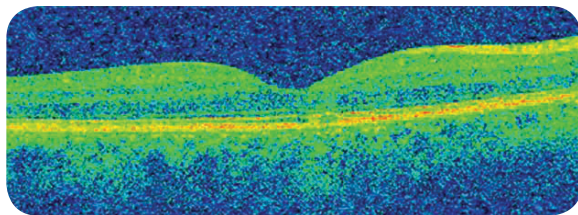
Normal PHP report.

LEFT EYE

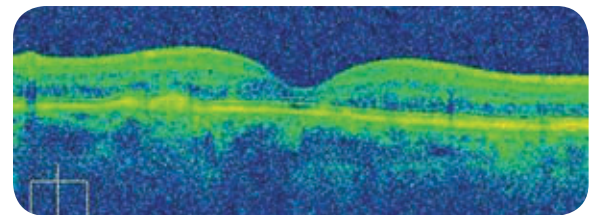


Abnormal PHP report associated with a history of an old CNV.

OCT



Disruption at the junction of the PIL and RPE layer. Correlation to the RPE change observed on the DFE.

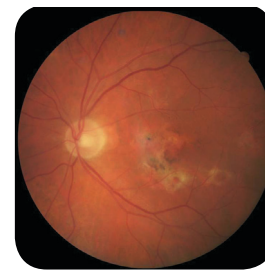


Abnormal hyperreflective areas and increased thickness at the level of the RPE.

DFE



Peripapillary atrophy and histo spots are noted. A small area of retinal atrophy is noted in the macula.



Fibrotic scarring associated with an old CNV. Histo spots are also noted throughout the fundus.

Foresee PHP manufactured by Notal Vision, Ltd.