

| PREMIER DIAGNOSTIC ULTRASOUND |

eyecubed



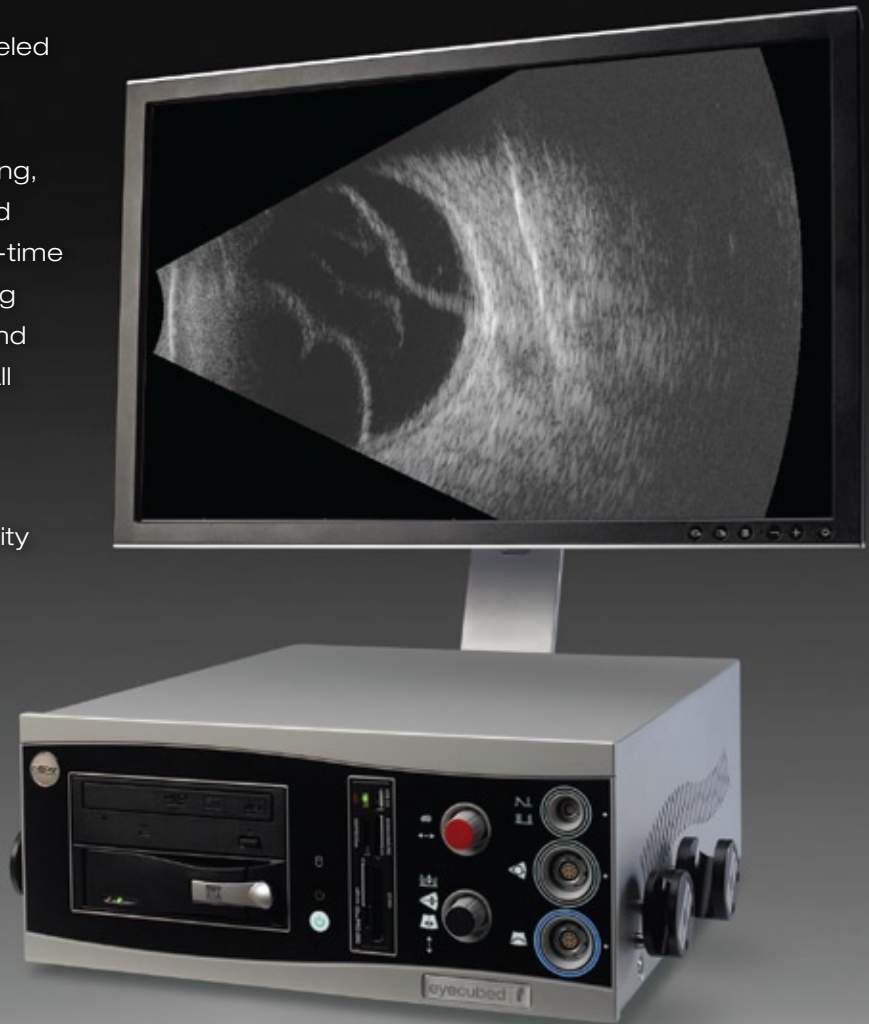
Diagnostic ultrasound
that delivers unparalleled
image resolution.

High Resolution Goes Ultra

THE NEW GENERATION EYE CUBED™ MAKES IT POSSIBLE TO
EVALUATE OCULAR STRUCTURES MORE CLEARLY THAN EVER BEFORE.

The Eye Cubed™ delivers highest-quality image resolution and unparalleled sensitivity that make it the premier device for ultrasound examination of the eye. Created by Innovative Imaging, the pioneers in ophthalmic ultrasound technology, the system features real-time imaging, advanced movie mode using the fastest sampling rate available, and internal memory for storing scans – all of which advance and improve your diagnostic capabilities.

The Eye Cubed's superior image clarity and flexible measurements allow for thorough pre-operative and post-operative assessment of ocular anatomy – essential in optimizing premium IOL outcomes. In addition, customized configuration of A-Scan and B-Scan modes ensures that the Eye Cubed™ meets all of your needs for both the posterior and anterior segments.



Indications for use

Posterior Segment Visualization	B-Scan
UBM Wide-Field Anterior Segment	B-Scan
Axial Length Biometry	A-Scan
Standardized Diagnostic Biometry	A-Scan

Ellex and Innovative Imaging

In 2006, Innovative Imaging joined with Ellex to become one of the ophthalmic industry's most advanced technology providers. The combination of the most in-demand diagnostic ultrasound with one of the world's leading ophthalmic laser providers has strengthened both companies' vision and position in the fight against blindness.

Why the Eye Cubed™ Delivers Superior Image Quality

Highest Signal-to-Noise Ratio

The unique amplifier and probe design of the Eye Cubed™ provides for the industry's highest signal-to-noise ratio, delivering substantially more ultrasonic data per second than any other system. Because noise is reduced to a minimum, details of even the finest ocular structures become visible – including blood and inflammatory cells.

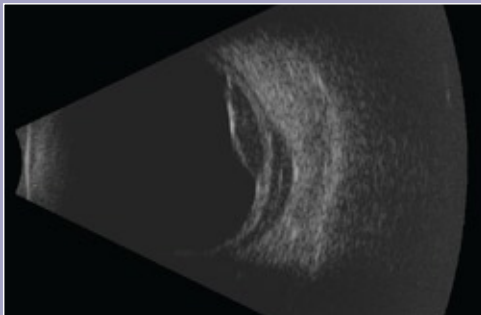
High-Speed Imaging

With an image acquisition rate of up to 25 frames-per-second, the Eye Cubed™ provides the fastest image-sampling rate available today. This speed creates a real-time view of detailed ocular activity, including blood cell movement and membrane behavior.

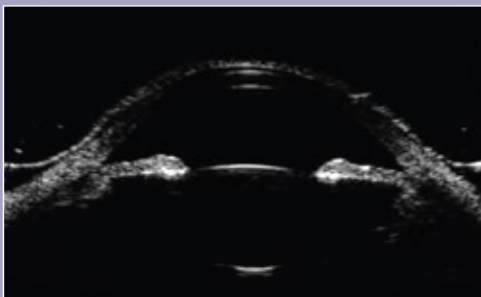
Advanced Movie Technology

The Eye Cubed's advanced movie technology greatly improves the diagnostic capability and speed of each exam, allowing you to capture up to 20-second movies. Review these movies frame by frame in order to reveal greater detail, or play them back in full movie mode.

B-Scan Modes

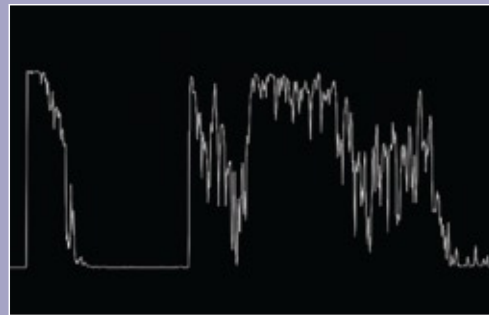


10 MHz Posterior Segment



40 MHz UBM Wide-Field Anterior Segment

A-Scan Modes



Standardized Diagnostic



Axial Length Biometry

Features and Benefits of the Eye Cubed™

Reliability, Performance and Versatility

Through a combination of highest-quality manufacturing processes and technical support, Ellex ensures that the Eye Cubed™ delivers the performance and results you have come to expect. In addition, each Eye Cubed™ is fully upgradeable, regardless of initial configuration, offering you maximum flexibility and versatility.

Customized Configuration

Customized configuration of A-Scan and B-Scan modes ensures that the Eye Cubed™ meets all of your needs for both the posterior and anterior segments. With the recent introduction of the Eye Cubed's 40 MHz UBM mode, anterior structures such as the cornea, iris, ciliary body, crystalline and intraocular lens can be viewed more clearly than ever before.

Intuitive, User-Friendly Software

The fourth generation Eye Cubed™ incorporates a number of features designed to accelerate practice workflow, including improved export and import functionality and expanded measurement options. Intuitive and easy-to-use, the software incorporates a multilingual user interface, full-screen scan viewing and customized report capability.

Precision Viewing

The Eye Cubed™ features a 24-inch, wide-screen LCD monitor for high-precision views of real-time movies and still images.

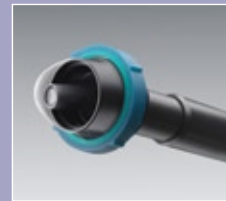
Better Practice Management

Images can be stored on the Eye Cubed's one-terabyte hard drive and recalled for additional analysis, measurement and documentation. The system's built-in DVD burner also allows you to quickly and easily export patient information, greatly improving practice efficiency.

Custom Velocity Settings

The Eye Cubed™ includes pre-programmed velocities for Phakic, Aphakic, and four types of Pseudophakic eyes, as well as Silicone Oil-filled eyes and adjustable velocities for special cases and independent velocities for different ocular structures.

Probes and Accessories



NEW! 40 MHz UBM Wide-Field Anterior Segment B-Scan Probe

available with
ClearScan®
Immersion Bag

*ClearScan is a registered trademark of ESI, Inc.



10 MHz Sealed B-Scan Probe



10 MHz Focused A-Scan Probe

with internal fixation
light for biometry
A-Scan



8 MHz A-Scan Probe

for standardized
diagnostic A-Scan

NEW
Innovative
Imaging
from Ellex



Product Specifications

Network and Connectivity

- Five USB 2.0 ports for memory sticks and peripherals
- Built-in multimedia reader
- Fully network and printer-ready (gigabit ethernet)
- “Easy Print” feature
- Windows XP operating system
- Multilingual user interface

Data Management

- Data archiving and image/movie export capability
- Customized report capability
- Custom protocols for scan labeling

B-Scan Modes

- Four sets of electronic distance measurement calipers with variable velocity
- Four sets of electronic angle measurement calipers
- Text annotations
- Movie sequence capture up to 20 seconds
 - Real-time image viewing
 - Movie editing capability

10 MHz Posterior Segment

- 25 frames-per-second image acquisition rate
- 10-second movie capability
- Sealed probe
- Adjustable gain (27-90 dB)
- Adjustable dynamic range
- Axial resolution: 50 microns*
- Lateral resolution: 100 microns*
- Scanning angle: 52 degrees
- Image depth: 45 mm

40 MHz UBM Wide-Field Anterior Segment

- 13 frames-per-second image acquisition rate
- 20-second movie capability
- Adjustable gain (27-90 dB)
- Adjustable dynamic range via Log, S1, S2, S3
- Axial resolution: 23 microns*
- Lateral resolution: 33 microns*
- Scanning angle: 30 degrees
- Image depth: 12.5 mm
- Image width at focal zone: 15-17 mm
- Focal range: 10.5 - 14.5 mm

Hardware Features

- Built-in DVD burner
- Removable one-terabyte hard drive
- Wide screen, 1920 x 1200 high-resolution monitor

Electrical Requirements

Power supply	100-240 VAC auto-ranging
Frequency	50/60 Hz
Input power	220 VA
System Size	15.5 x 17 x 6.5 inches (39 x 43 x 16.5 cm)
Weight	26 lbs. (12kg)

A-Scan Modes

- IOL power calculations and analysis:
 - Holladay-I
 - SRK-T
 - Haigis
 - Hoffer-Q
- Movie sequence adjustable up to 5 seconds
- 50 frames-per-second image acquisition rate

Axial Length Biometry A-Scan

- Immersion or contact method
- Solid focused probe with internal fixation light
- Probe frequency: 10 MHz
- Image depth: 40 mm
- Points on x-axis: 2048
- 8 bit resolution
- Steps of resolution: 256
- Measurement accuracy: 50 microns inherent, 100 microns clinical
- Automatic or manual scan acquisition
- Built-in pattern recognition with automatic scleral echo detection
- Statistics: average and standard deviation

Standardized Diagnostic A-Scan

- Two caliper measurements displayed in mm with variable velocities
- Tissue sensitivity value stored in memory with reset function
- Probe frequency: 8 MHz parallel beam
- Measurement accuracy: 50 microns inherent, 100 microns clinical

Specifications are subject to change without notice.



Headquarters

82 Gilbert Street
Adelaide, SA, 5000 AUSTRALIA
+61 8 8104 5200

Japan

4-3-7 Miyahara 4F, Yodogawa-ku
Osaka 532-0003 JAPAN
+81 6 6396 2250

USA

7138 Shady Oak Road
Minneapolis, MN, 55344 USA
800 824 7444

Germany

Ostring 45
63533 Mainhausen GERMANY
+49 6182 9292 95

Australia

Suite 2, Ground Floor, 18-20 Orion Road
Lane Cove, NSW, 2066 AUSTRALIA
1800 817 920

Europe Support Center

108, avenue Marx Dormoy
63000 Clermont-Ferrand FRANCE
+33 4 73 34 18 55